

**2011**

**2012**

**2011 12 9**

# 2011



# 2012



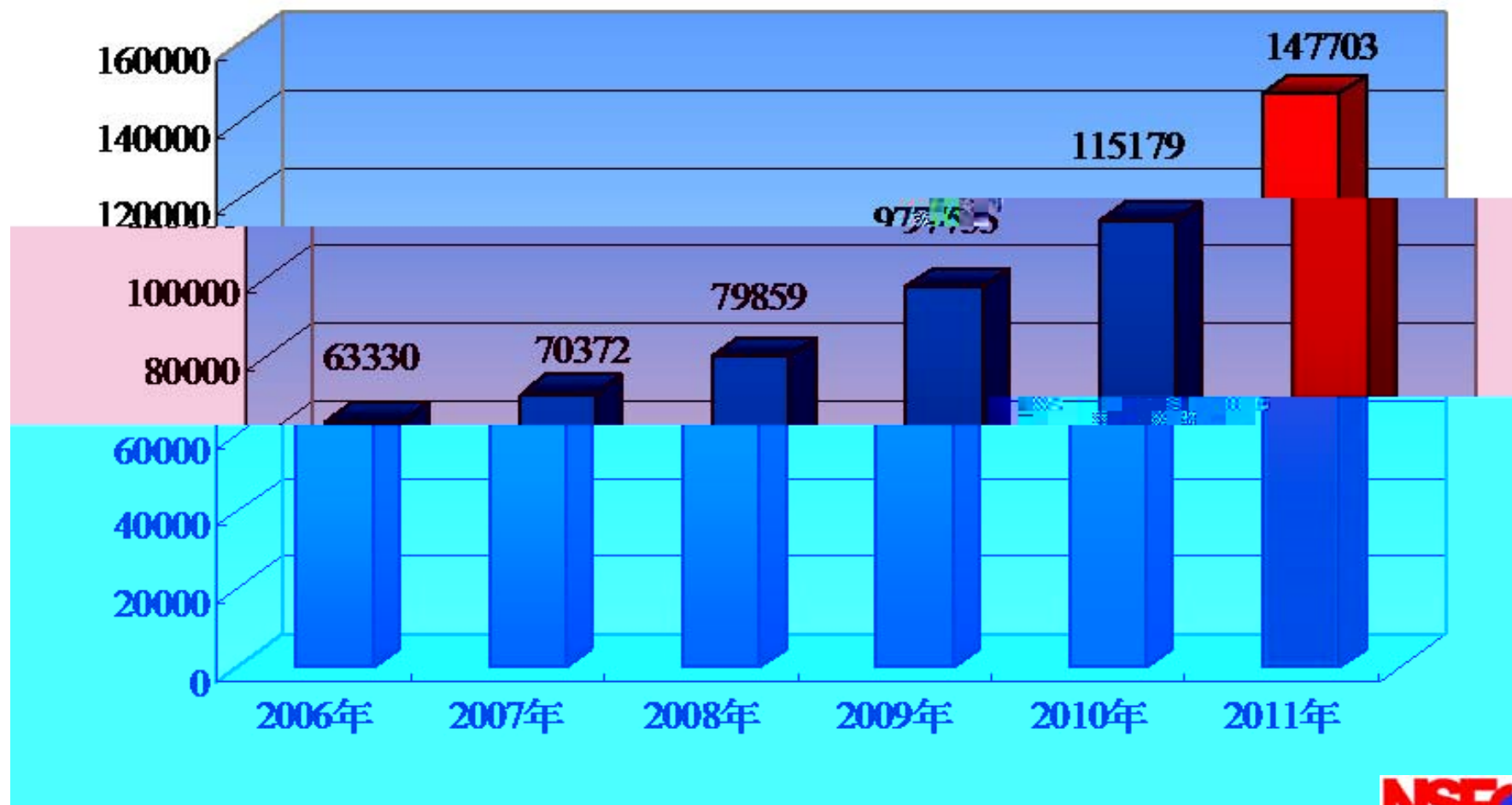
# 2011



		<b>147703</b>		
	<b>32524</b>	<b>28.24%</b>	<b>2010</b>	<b>115179</b>
<b>2010</b>		<b>17.82%</b>		
<b>2009</b>		<b>22.41%</b>		
<b>2008</b>		<b>13.48%</b>		
<b>2007</b>		<b>11.12%</b>		
<b>12</b>	<b>7</b>			<b>153881</b>

# 2006-2011

2006-2011申请项数示意图



# 2011

	2010	2011	
	*)% *	+*\$*&	%"+ ++%
	&%&\$	&' \$	' , " &%%
	(-	\$	/
	, %%	), &	! & " &(%
	% \$,	&\$&%	)" - &%
	' * & \$	)( \$- %	(- " \$- %
	* &%	, ) &(	' + " &\$%
	(%*	()+	- " , *%
	%\$&	%&%	% " *' %
( )	& )	' * &	&+ " \$&%
	, +(	%\$+,	&' "' (%
	* (,	, \$%	&' " *%&
	&* +	* +(	% &' (' %
	70	0	/
	%& %&-	% ++\$'	& " &(%

**2011**

**17781      2010      7757      49.9%**

**35                      8762                      49.28**

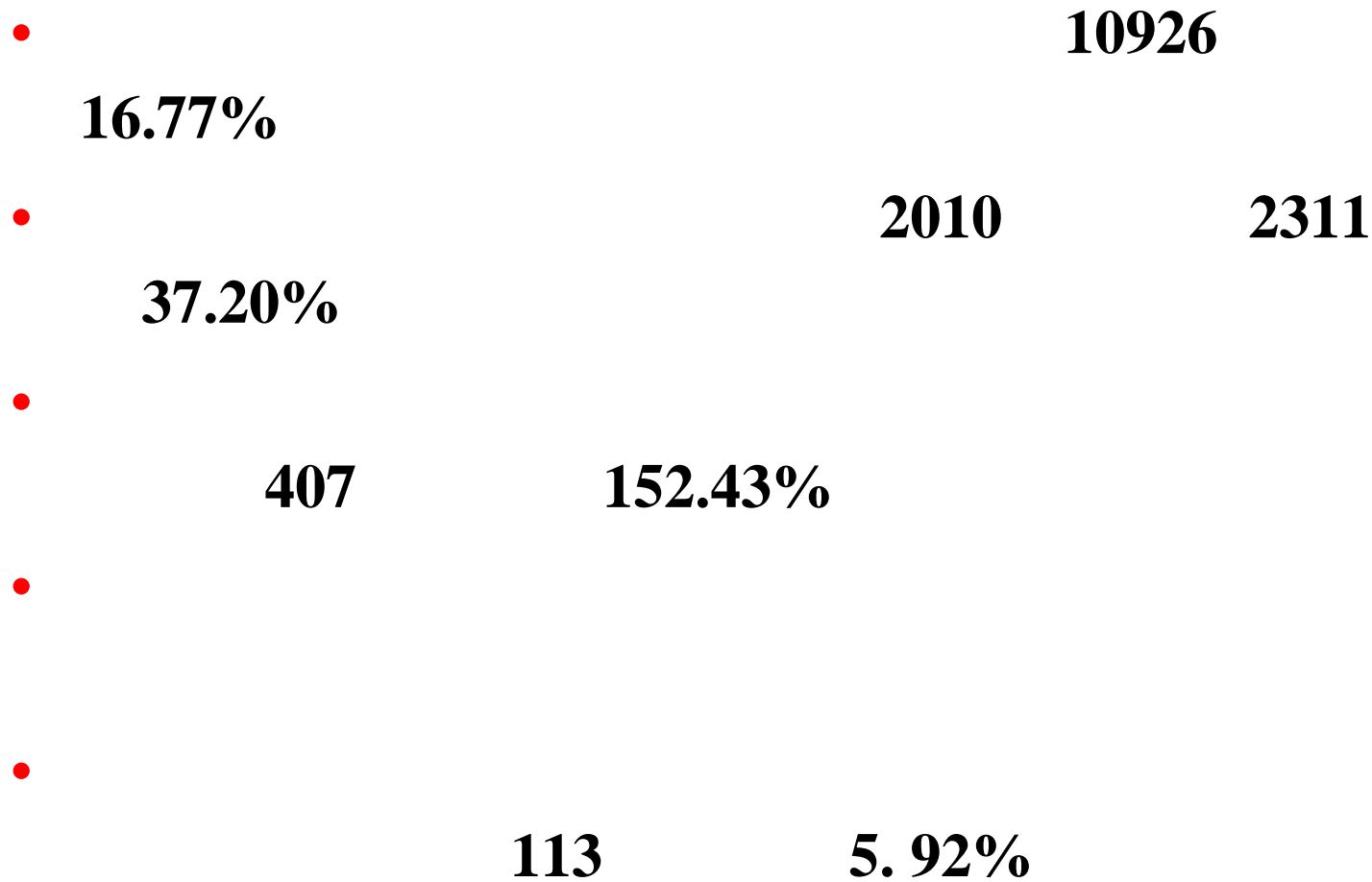
' )	<b>361</b>	<b>700</b>	<b>1353</b>	<b>414</b>	<b>1293</b>	<b>752</b>	<b>615</b>	<b>3274</b>	<b>8762</b>
	<b>4.12 %</b>	<b>7.99 %</b>	<b>15.44 %</b>	<b>4.72 %</b>	<b>14.76 %</b>	<b>8.58 %</b>	<b>7.02 %</b>	<b>37.37 %</b>	<b>100%</b>

**2011**

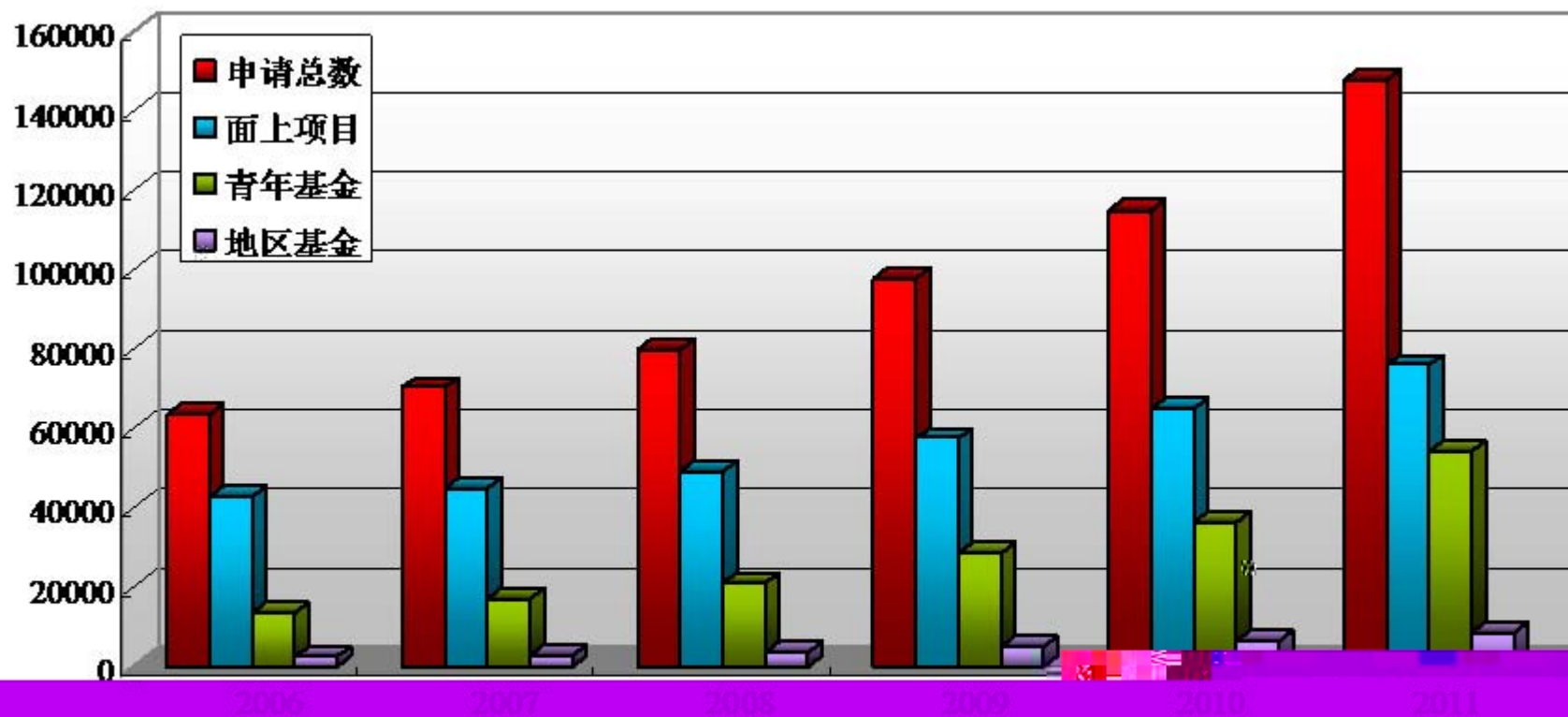
**810**      **2010**      **51**      **38.21%**      **2010**  
**2.46%**      **65**      **4**  
**2.35%**

	<b>2930</b>	<b>65</b>	<b>4</b>	<b>2.35%</b>
	<b>674</b>	<b>24</b>	<b>5</b>	<b>4.30%</b>





# 2006-2011



2011

20%-35%

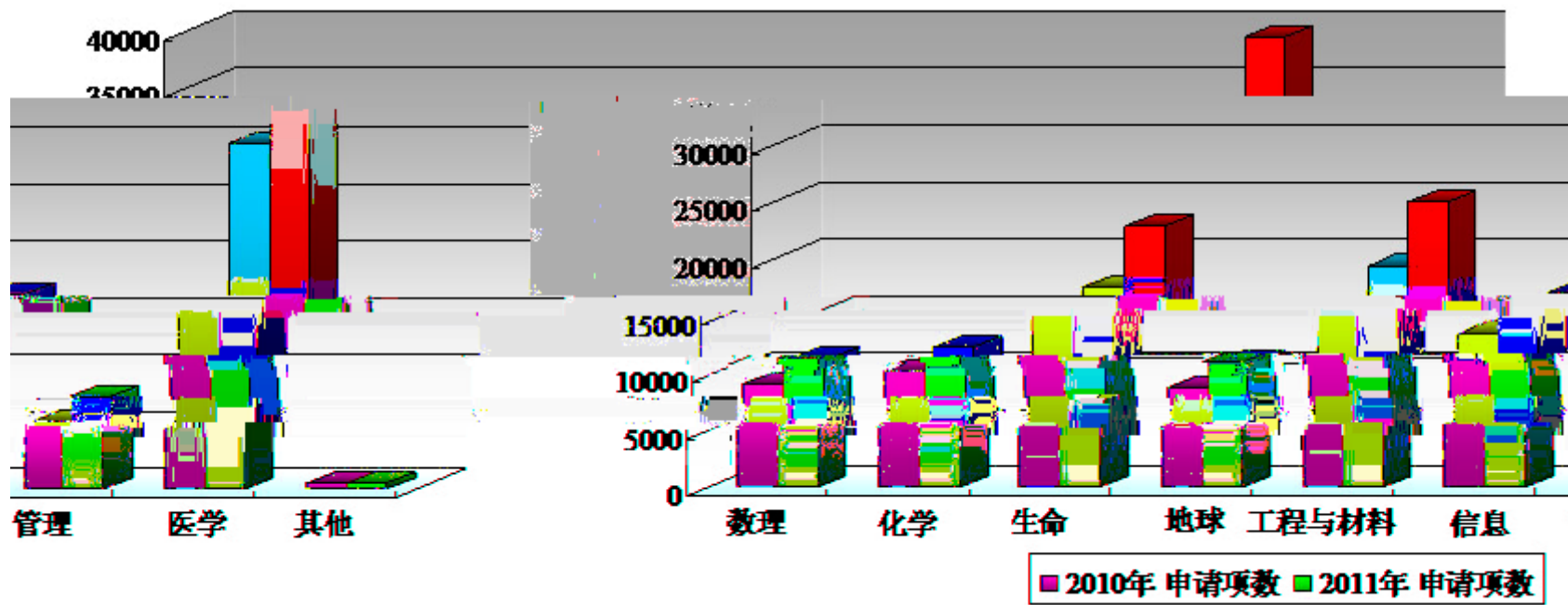
30.58%

34.62%

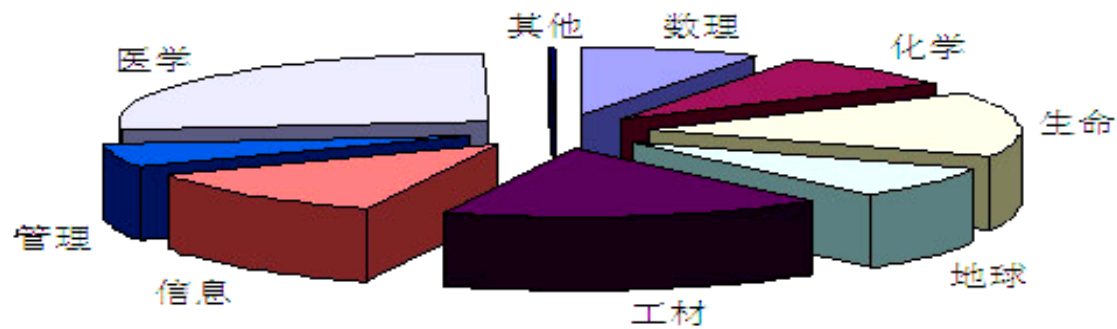
30.36%

25%

	2010	2011		
			2010	
	9017	11340	25.76%	7.68%
	10208	12331	20.80%	8.35%
	17527	22887	30.58%	15.50%
	8693	10940	25.85%	7.41%
	19435	24933	28.29%	16.88%
	13467	17139	27.27%	11.60%
	6040	8131	34.62%	5.50%
	30347	39561	30.36%	26.78%
	445	441	-0.9%	0.30%
	115179	147703	28.24%	100.00%

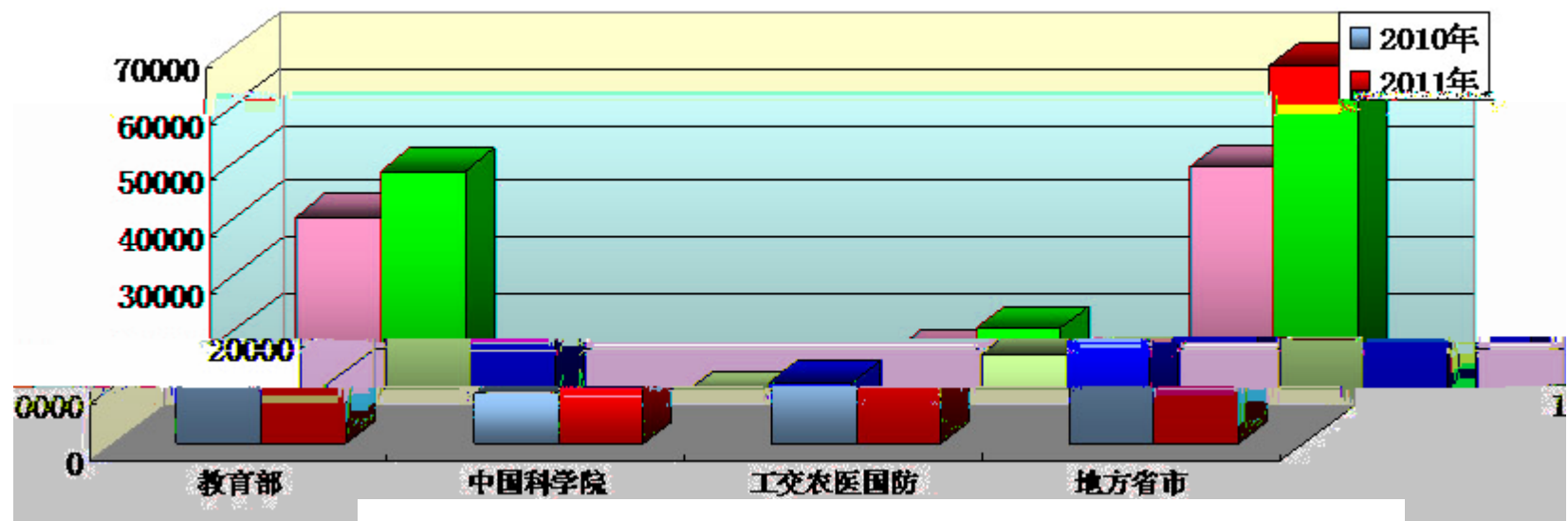


2011年申请项数科学部分布图

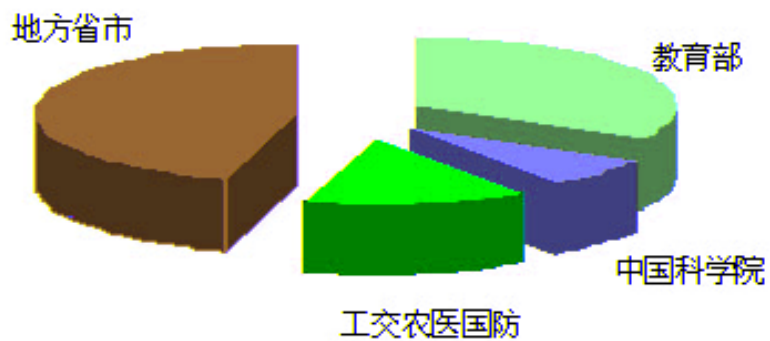




	2010	2011		
			2010	
	<b>40635</b>	<b>48751</b>	<b>19.97%</b>	<b>33.01%</b>
	<b>8935</b>	<b>10820</b>	<b>21.10%</b>	<b>7.33%</b>
	<b>16213</b>	<b>20660</b>	<b>27.43%</b>	<b>13.99%</b>
	<b>49396</b>	<b>67472</b>	<b>36.59%</b>	<b>45.68%</b>
	<b>115179</b>	<b>147703</b>	<b>28.24%</b>	<b>100.00%</b>



2011年申请项目数隶属部门分布情况示意图





**2011**

**1985**

**2010**

**159**

**200**

**176**

**2010**

**50**

**1000**

**19**

**2010**

**3**

**20**

- 
- 
-

**147703**

**143790**

**3913**

**2.6%**

**2010 3.6%**

**2009 4.0%**

**2008 4.2%**

**483**

**12.34%**

**443**

**40**

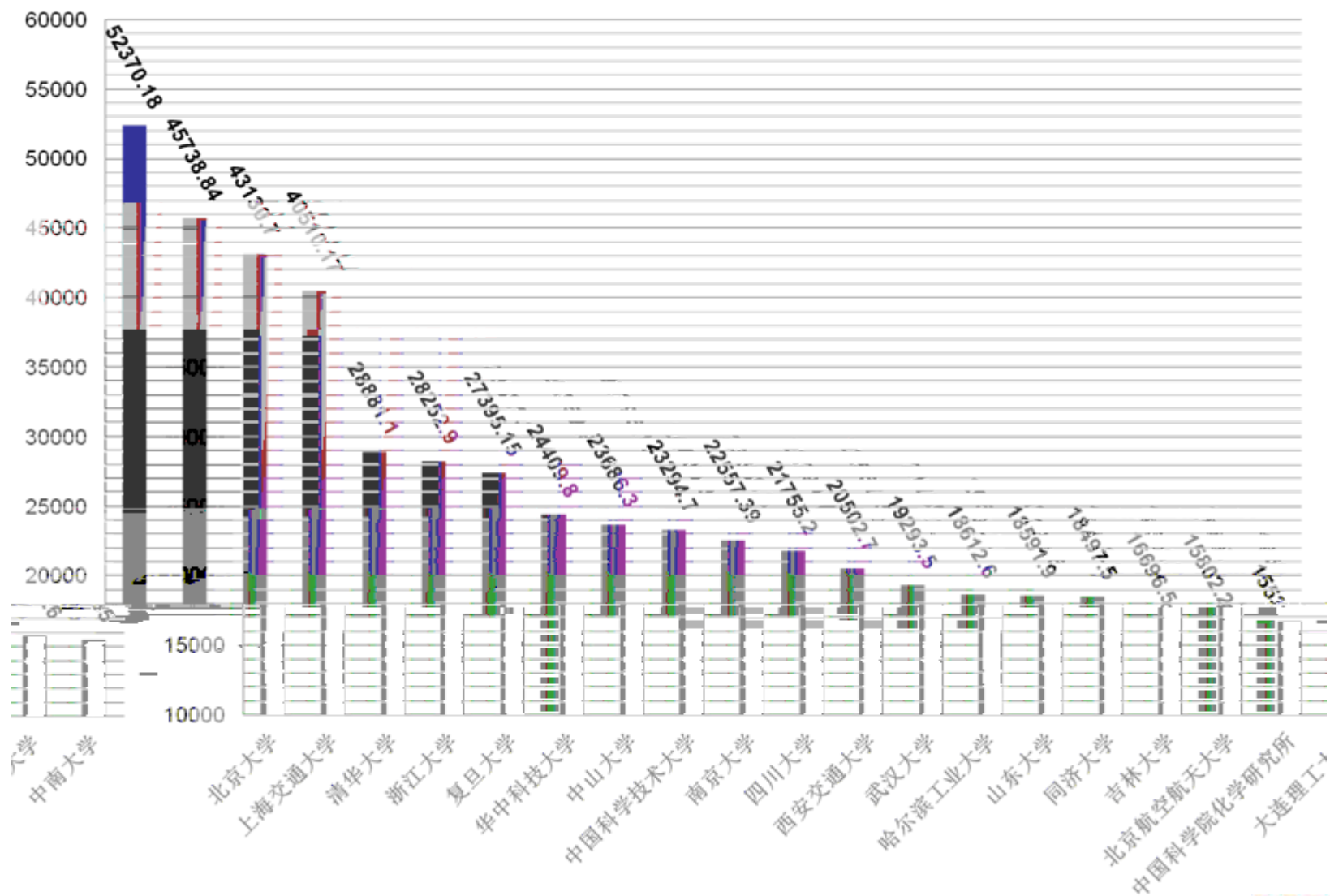
**413**

**30**

**2**



### 2011年获得资助经费最多的前20个依托单位



**15329**

**898941**

**13030**

**2299**

**17.64%**

**29.51%**

**20.15%**

**20%**

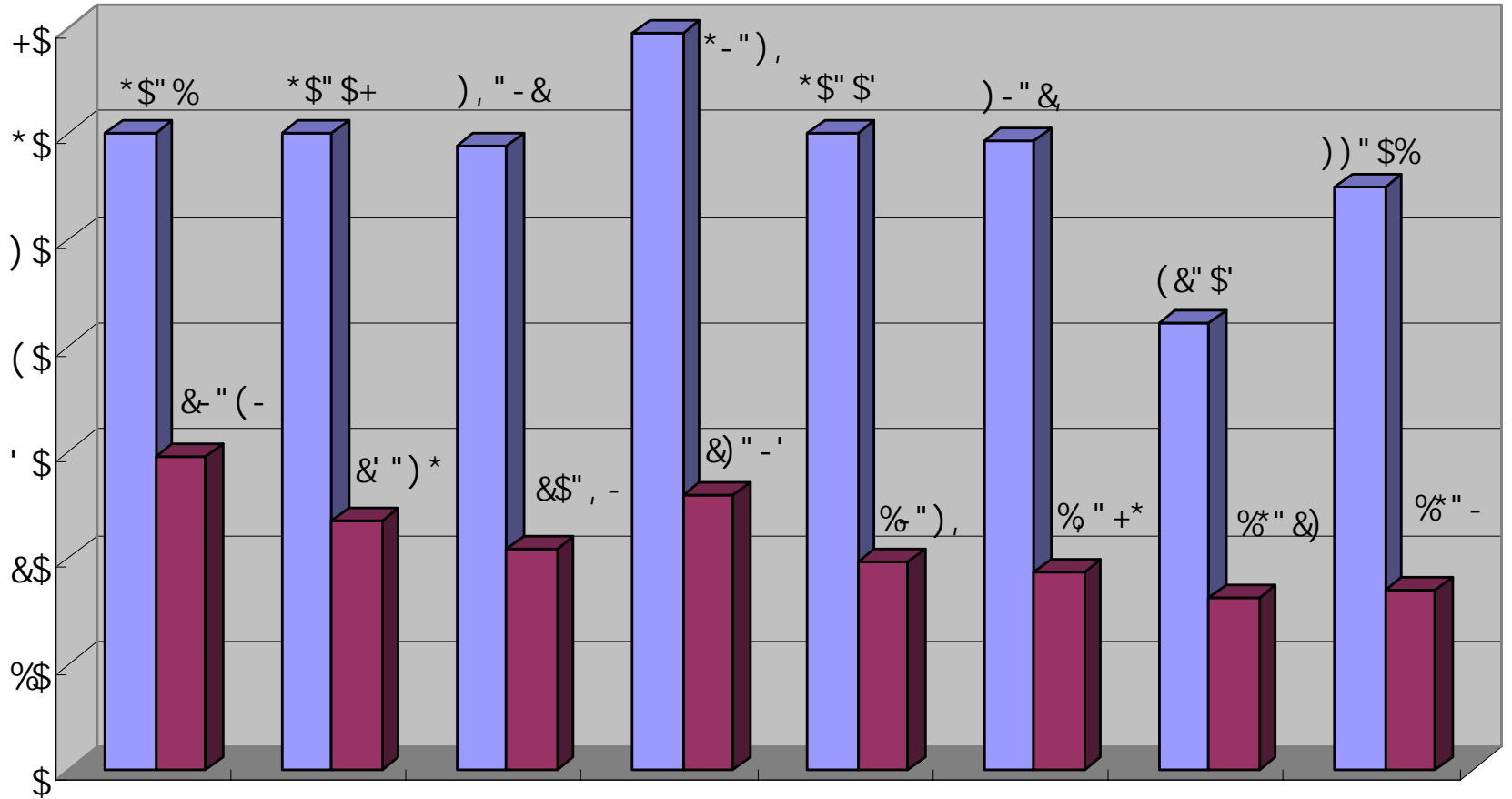
**58.64 /**

# 2011

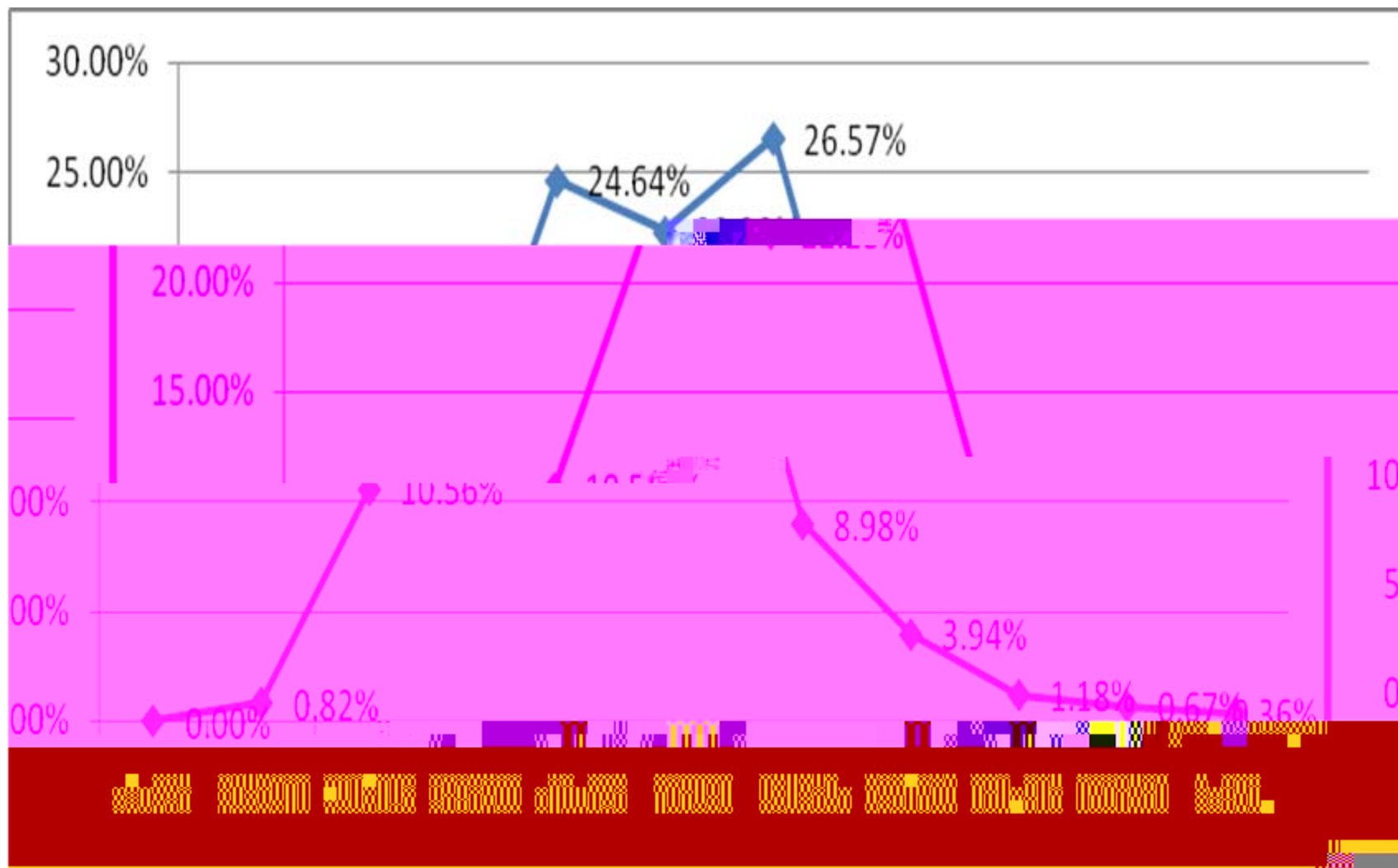
				%	( /	%
	<b>76062</b>	<b>15329</b>	<b>898941</b>	<b>100.00%</b>	<b>58.64</b>	<b>20.15%</b>
	<b>4852</b>	<b>1431</b>	<b>86000</b>	<b>9.57%</b>	<b>60.1</b>	<b>29.49%</b>
	<b>6324</b>	<b>1490</b>	<b>89500</b>	<b>9.96%</b>	<b>60.07</b>	<b>23.56%</b>
	<b>11724</b>	<b>2449</b>	<b>144290</b>	<b>16.05%</b>	<b>58.92</b>	<b>20.89%</b>
	<b>5364</b>	<b>1391</b>	<b>96790</b>	<b>10.77%</b>	<b>69.58</b>	<b>25.93%</b>
	<b>13308</b>	<b>2606</b>	<b>156442</b>	<b>17.40%</b>	<b>60.03</b>	<b>19.58%</b>
	<b>8587</b>	<b>1611</b>	<b>95500</b>	<b>10.62%</b>	<b>59.28</b>	<b>18.76%</b>
	<b>4233</b>	<b>688</b>	<b>28919</b>	<b>3.22%</b>	<b>42.03</b>	<b>16.25%</b>
	<b>21670</b>	<b>3663</b>	<b>201500</b>	<b>22.42%</b>	<b>55.01</b>	<b>16.90%</b>



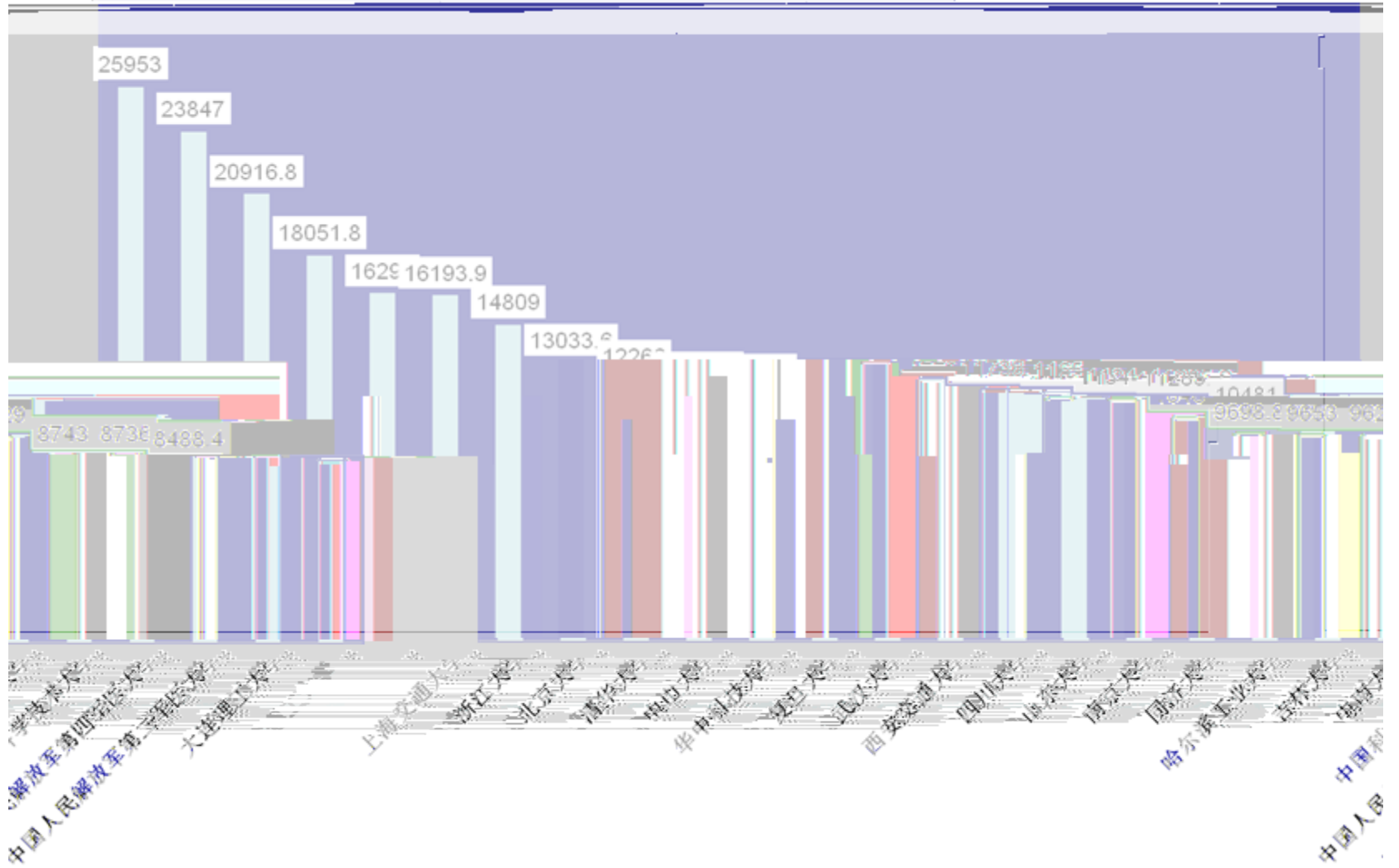
# 2011



# 2011



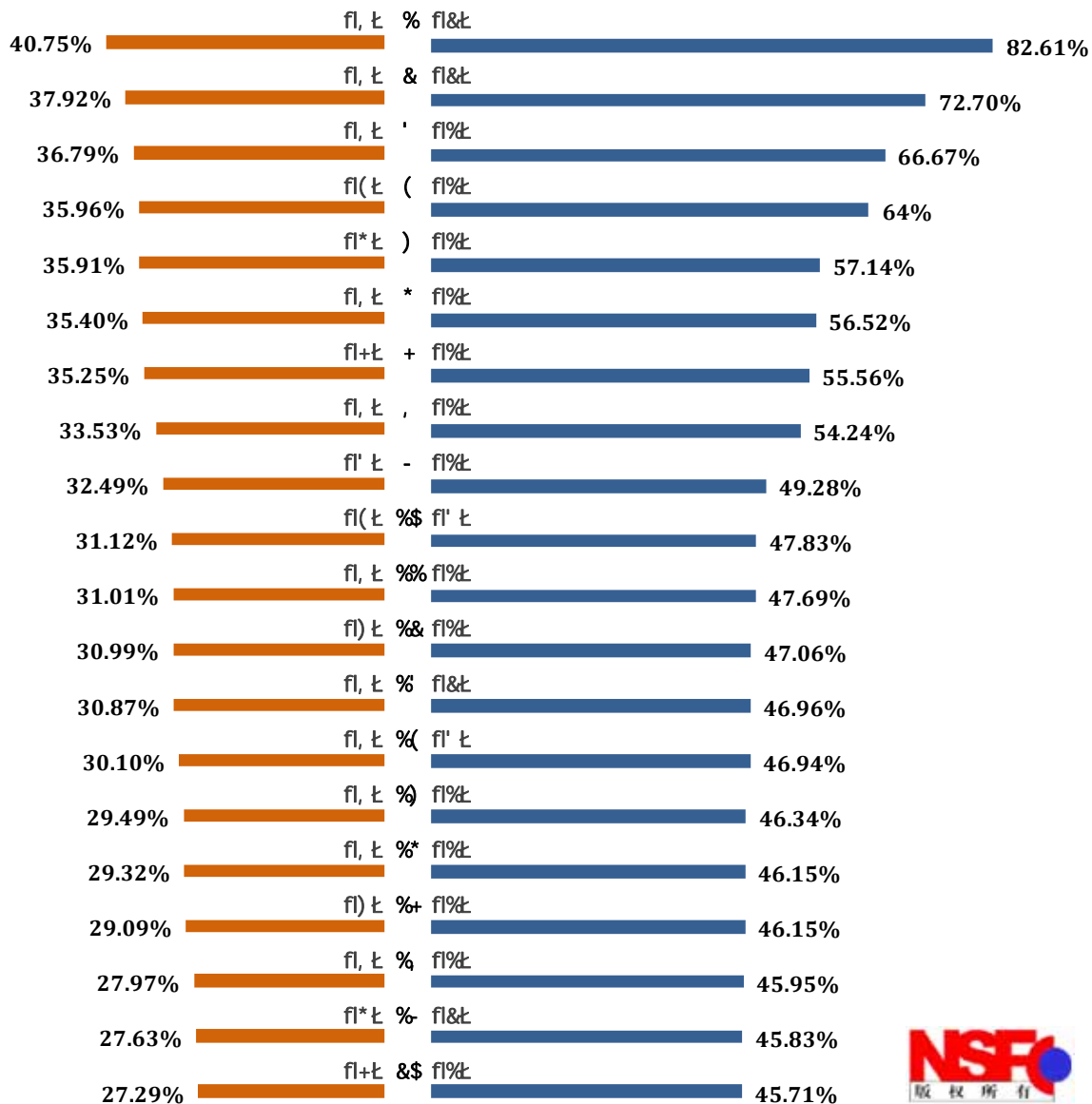
2011年获得面上项目资助前20个依托单位(万元)



# 2011

# Top20

1. 2011  
 1705  
 758  
 ( 171 )  
 659 ( 288 )  
 136 )  
 2.  
 ( 100 )  
 ) ( )  
 20 )  
 5



**497**

**142500**

**436**

**96450**

**286.72 /**

**65.5 /**

**221.22 /**

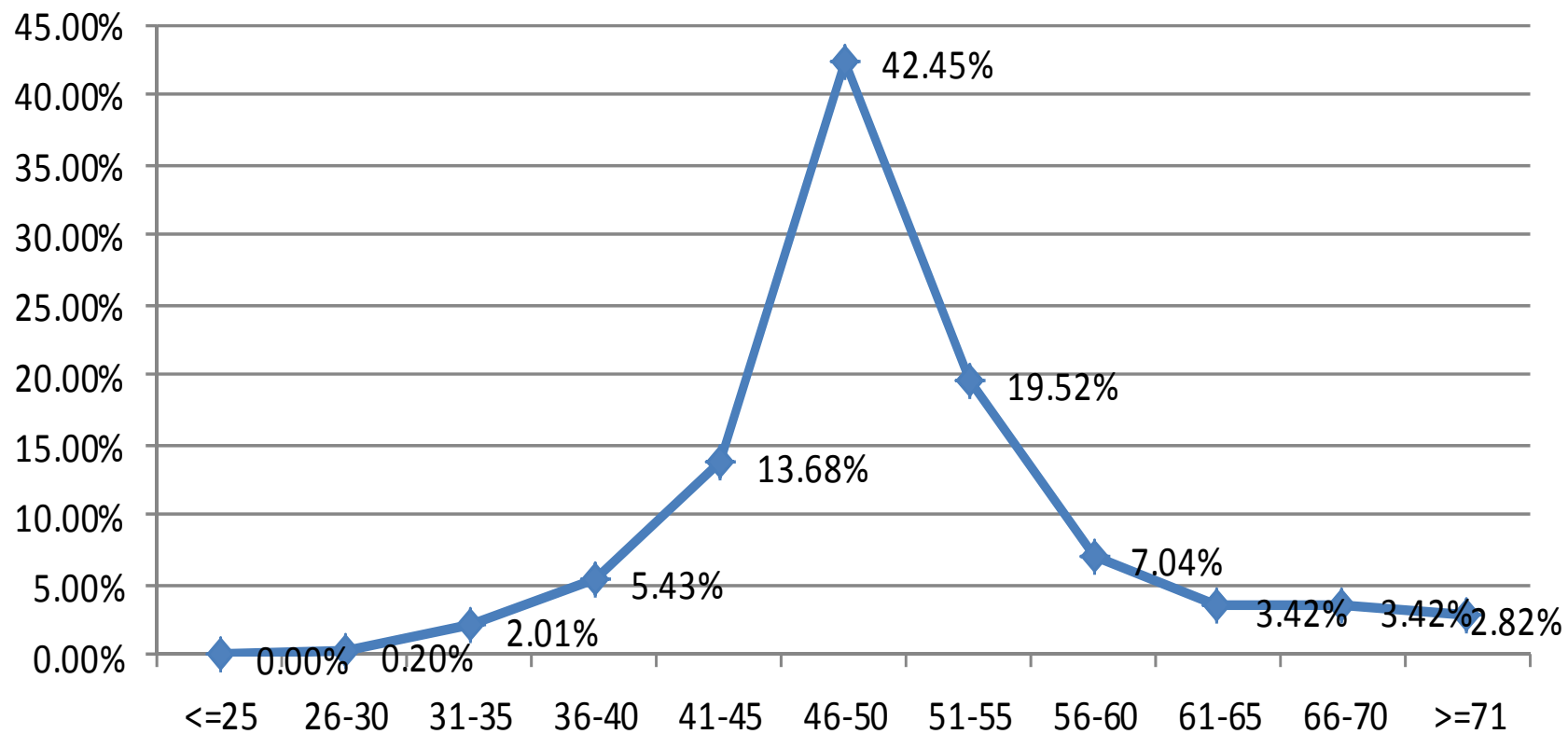
**150 /**

**500 /**

# 2011

				/	/
	<b>223</b>	<b>54</b>	<b>16100</b>	<b>298.15</b>	<b>200-390</b>
	<b>258</b>	<b>51</b>	<b>15400</b>	<b>301.96</b>	<b>280-352</b>
	<b>550</b>	<b>72</b>	<b>21400</b>	<b>297.22</b>	<b>240-380</b>
	<b>467</b>	<b>67</b>	<b>20100</b>	<b>300</b>	<b>260-360</b>
	<b>354</b>	<b>73</b>	<b>21200</b>	<b>290.41</b>	<b>240-310</b>
	<b>256</b>	<b>66</b>	<b>18900</b>	<b>286.36</b>	<b>270-300</b>
	<b>149</b>	<b>26</b>	<b>6400</b>	<b>246.15</b>	<b>150-500</b>
	<b>673</b>	<b>88</b>	<b>23000</b>	<b>261.36</b>	<b>220-300</b>
	<b>2930</b>	<b>497</b>	<b>142500</b>	<b>286.72</b>	<b>150-500</b>

# 2011



**2011**

**13**

**7**

**12**

**8 26**

**27**

**136**

**11**



**12 6 2011 16**  
**1616 432**  
**62013**

**2011**

**2011**

**2021**

**17**

**5**

**1**

**2011**

**200**

**198**

**13146**

**311710**

**8350**

**4796**

**57.44%**

**24.30%**

**23.02%**

**1.28**

**23.71 /**

**19.71 /**

**4**

**5627**

**21.9%**

**42.8%**    **36**

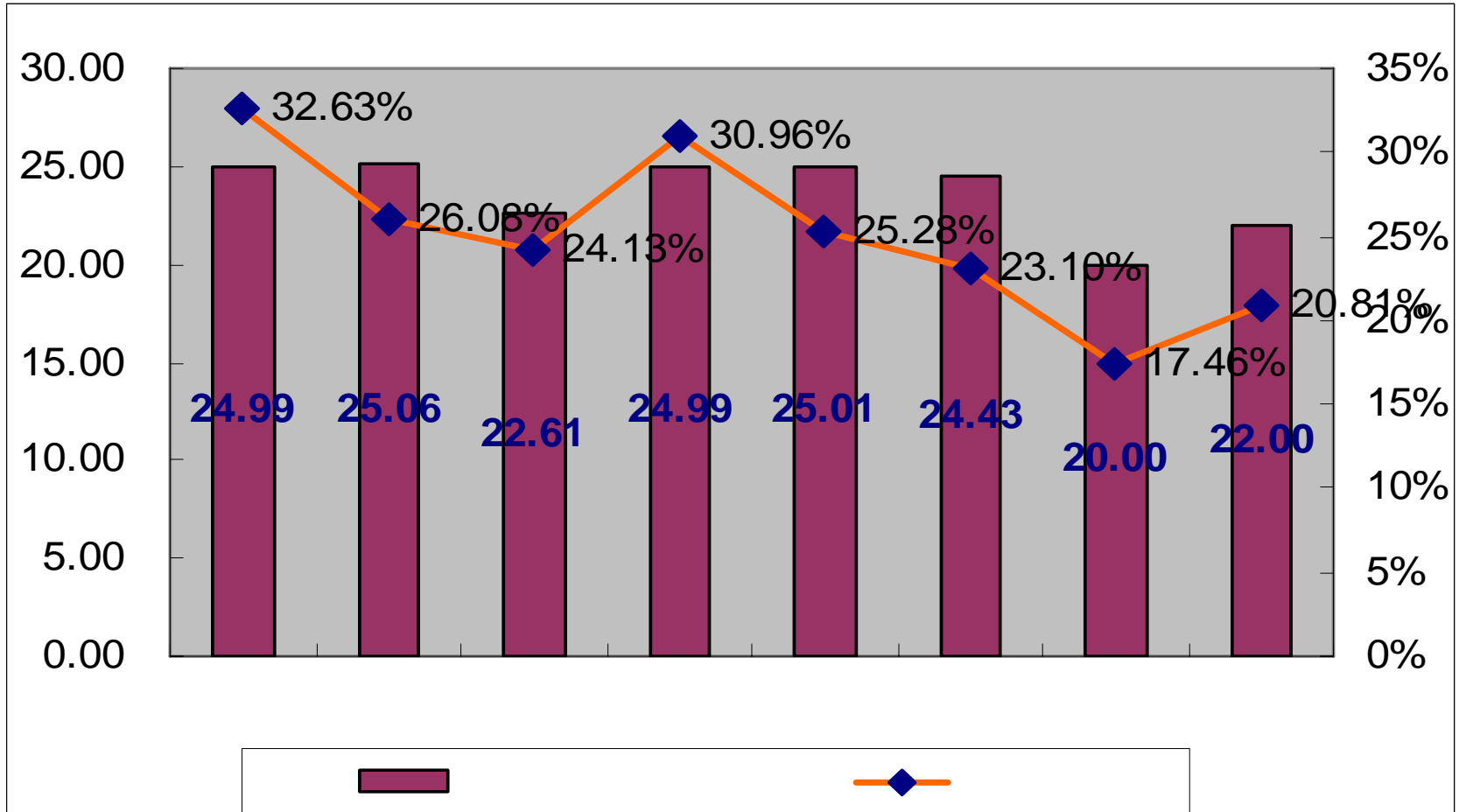
**1804**

**20.6%**

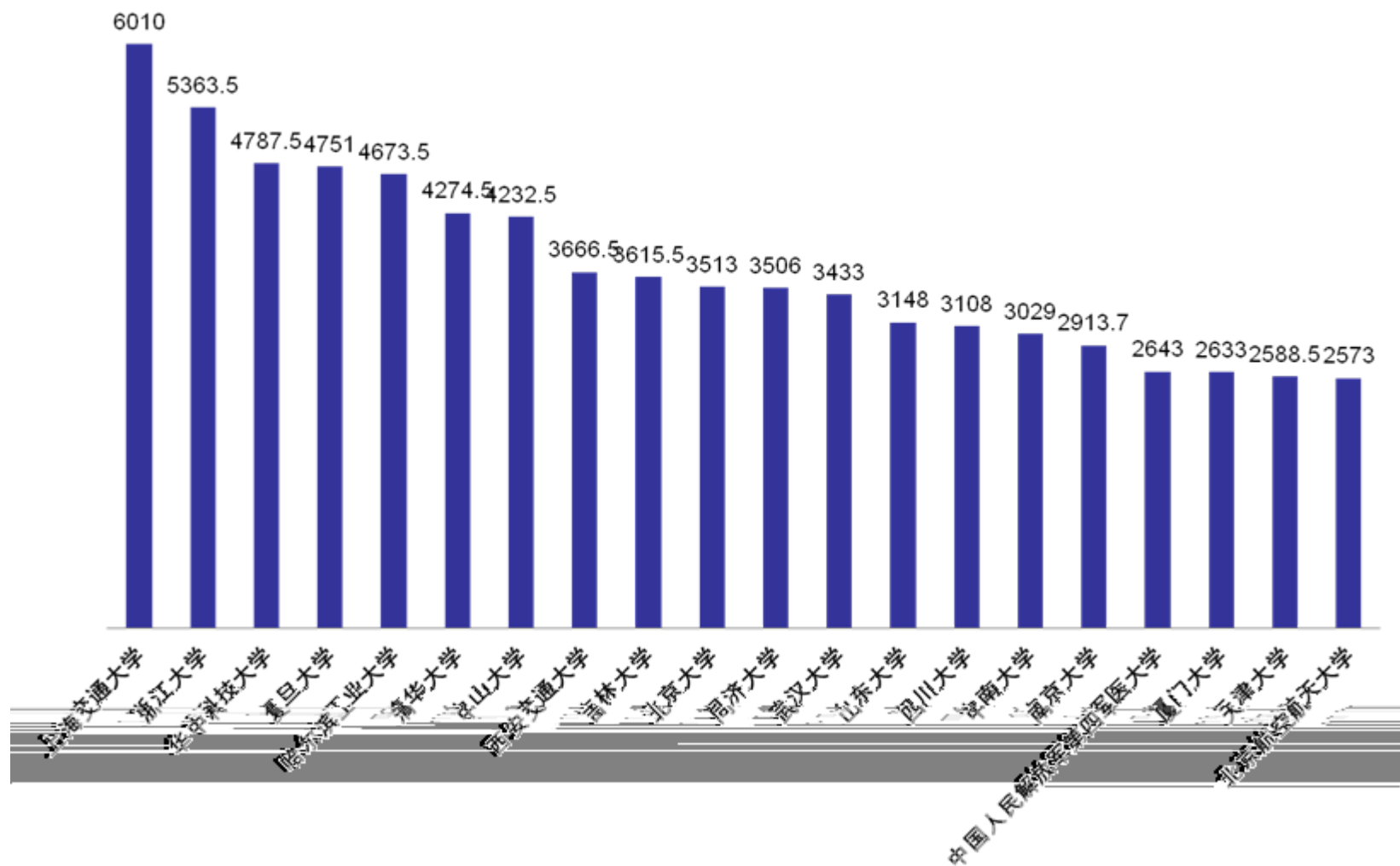
# 2011

				%	( /	%
	<b>54091</b>	<b>13146</b>	<b>311710</b>	<b>100%</b>	<b>23.71</b>	<b>24.30%</b>
	<b>4247</b>	<b>1386</b>	<b>34640</b>	<b>11.11%</b>	<b>24.99</b>	<b>32.63%</b>
	<b>4486</b>	<b>1170</b>	<b>29320</b>	<b>9.41%</b>	<b>25.06</b>	<b>26.08%</b>
	<b>8035</b>	<b>1939</b>	<b>43840</b>	<b>14.06%</b>	<b>22.61</b>	<b>24.13%</b>
	<b>4199</b>	<b>1300</b>	<b>32490</b>	<b>10.42%</b>	<b>24.99</b>	<b>30.96%</b>
	<b>9134</b>	<b>2309</b>	<b>57750</b>	<b>18.53%</b>	<b>25.01</b>	<b>25.28%</b>
	<b>6858</b>	<b>1584</b>	<b>38700</b>	<b>12.42%</b>	<b>24.43</b>	<b>23.10%</b>
	<b>3190</b>	<b>557</b>	<b>11140</b>	<b>3.57%</b>	<b>20.00</b>	<b>17.46%</b>
	<b>13942</b>	<b>2901</b>	<b>63830</b>	<b>20.48%</b>	<b>22.00</b>	<b>20.81%</b>

# 2011

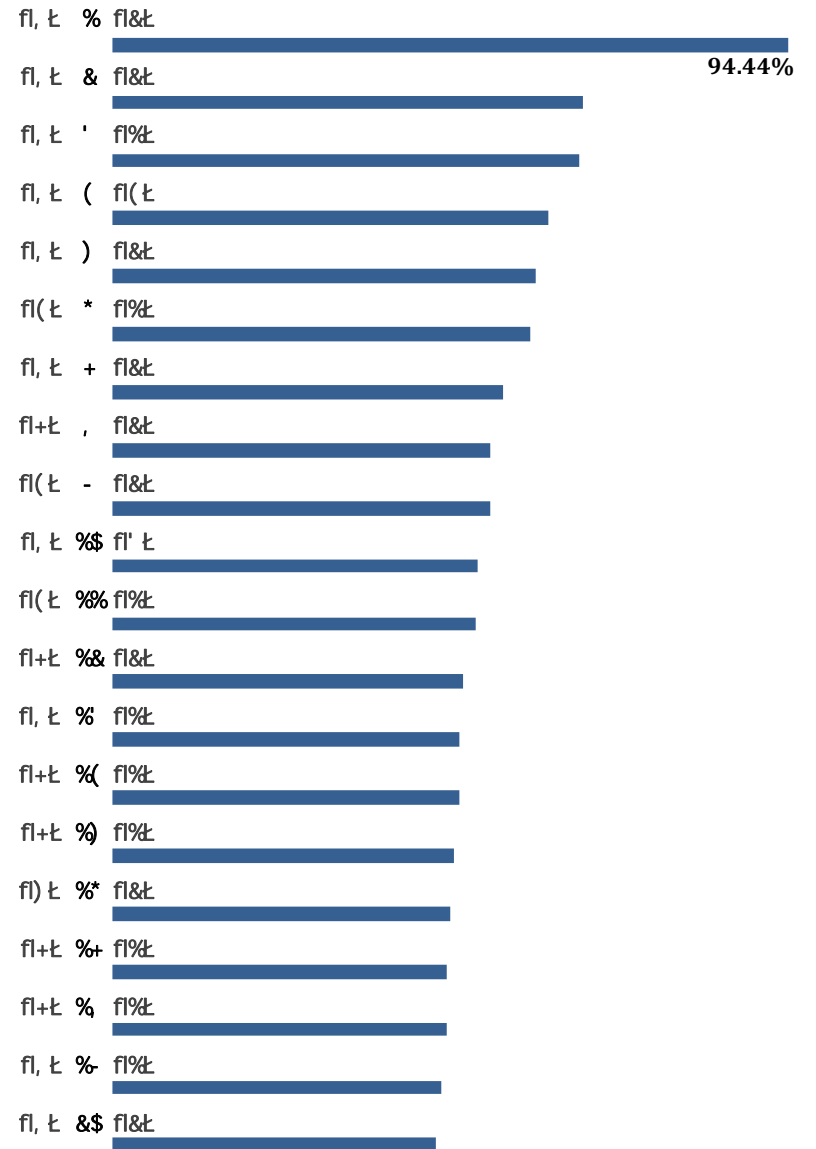


## 2011年获得青年科学基金资助前20个依托单位(万元)



2011

# Top20





**2033**

**99920**

**1326**

**707**

**53.32%**

**23.85%**

**21.34%**

**2.51**

**49.15 /**

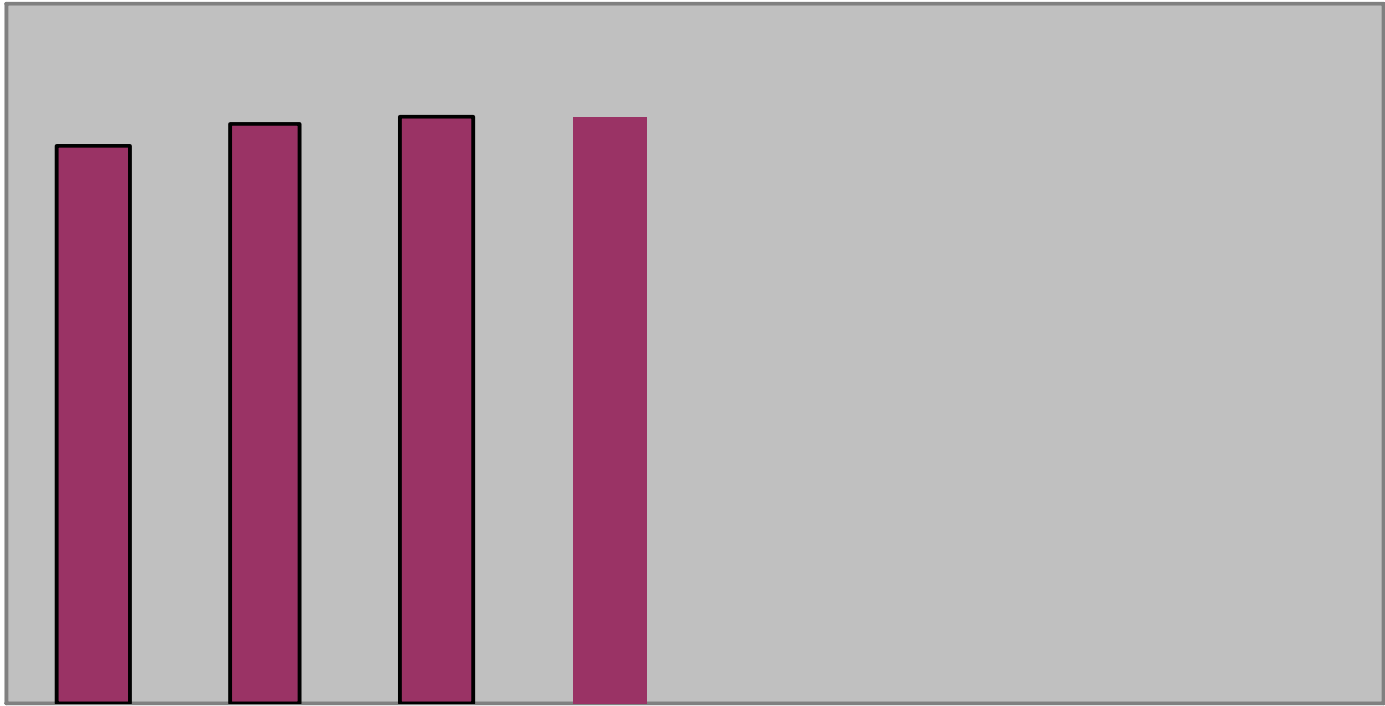
**25.31 /**

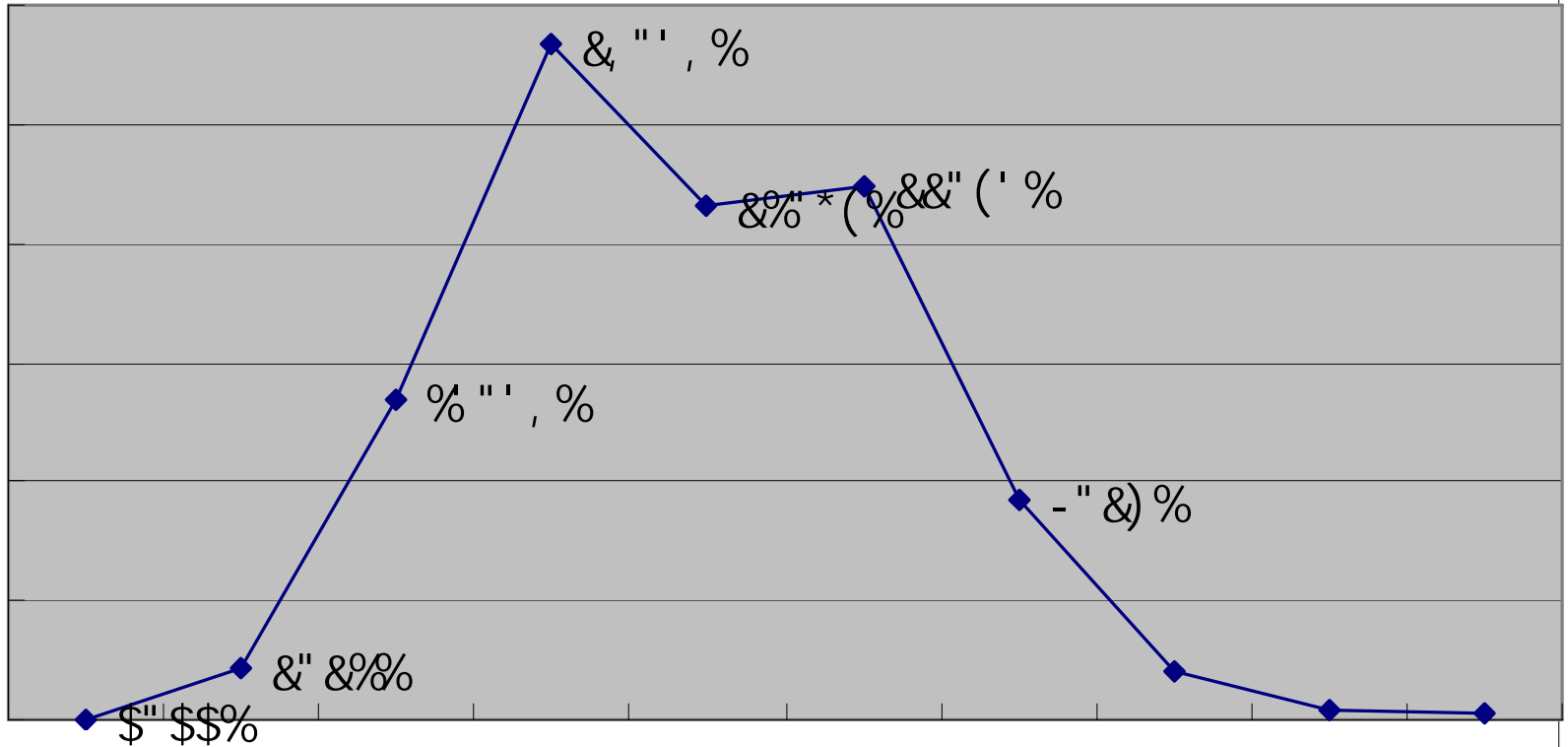
**23.84**

**/**

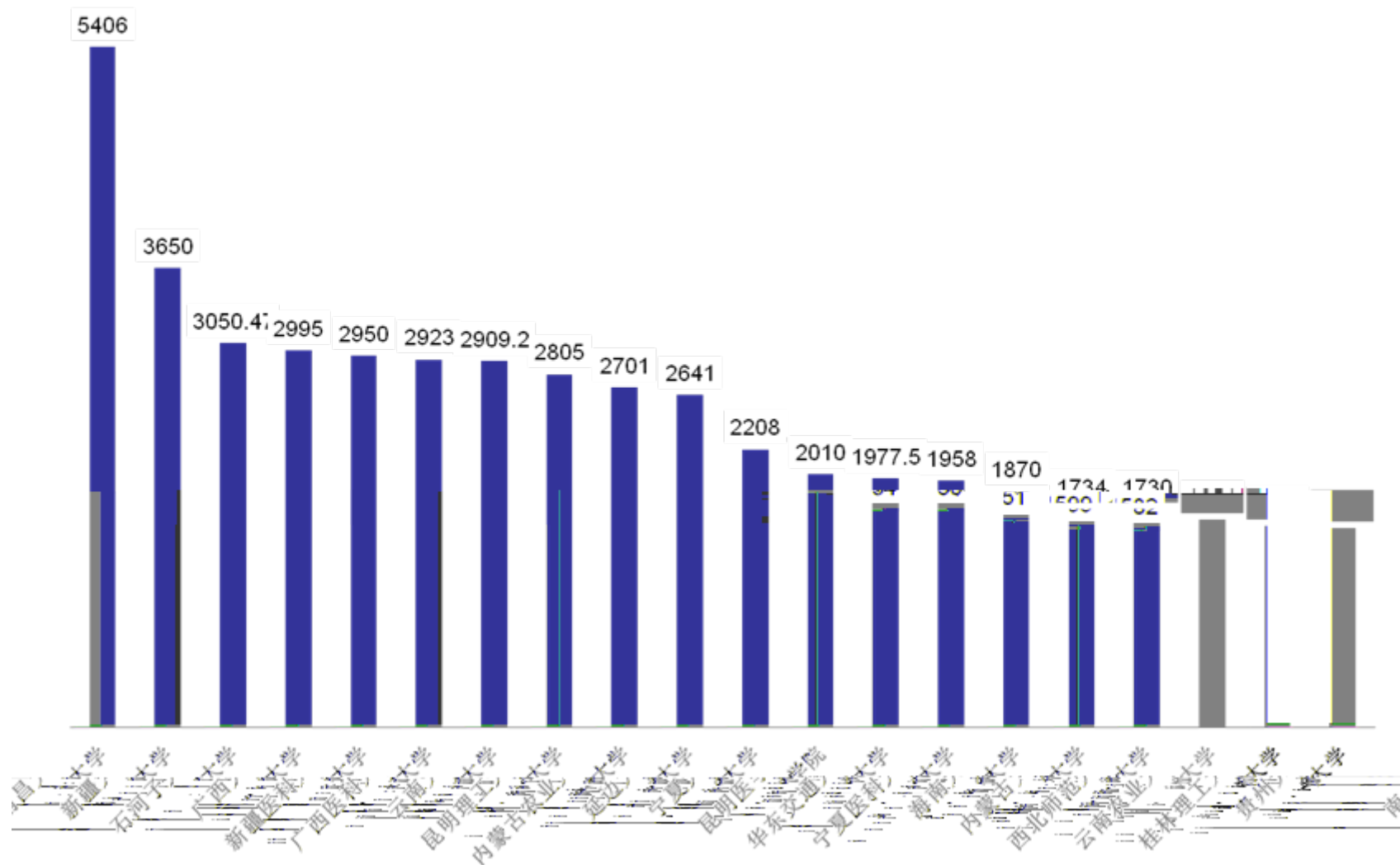
# 2011

				%	( / )	%
	8524	2033	99920	100%	49.15	23.85%
	407	135	6460	6.47%	47.85	33.17%
	680	173	8610	8.62%	49.77	25.44%
	2168	535	26880	26.90%	50.24	24.68%
	470	130	6530	6.54%	50.23	27.66%
	1043	249	12460	12.47%	50.04	23.87%
	693	156	7570	7.58%	48.53	22.51%
	422	95	3410	3.41%	35.89	22.51%
	2641	560	28000	28.02%	50.00	21.20%





## 2011年获得地区基金资助前20个依托单位(万元)



# 2011

## Top20

1. 2011

286

136 (

51 )

91

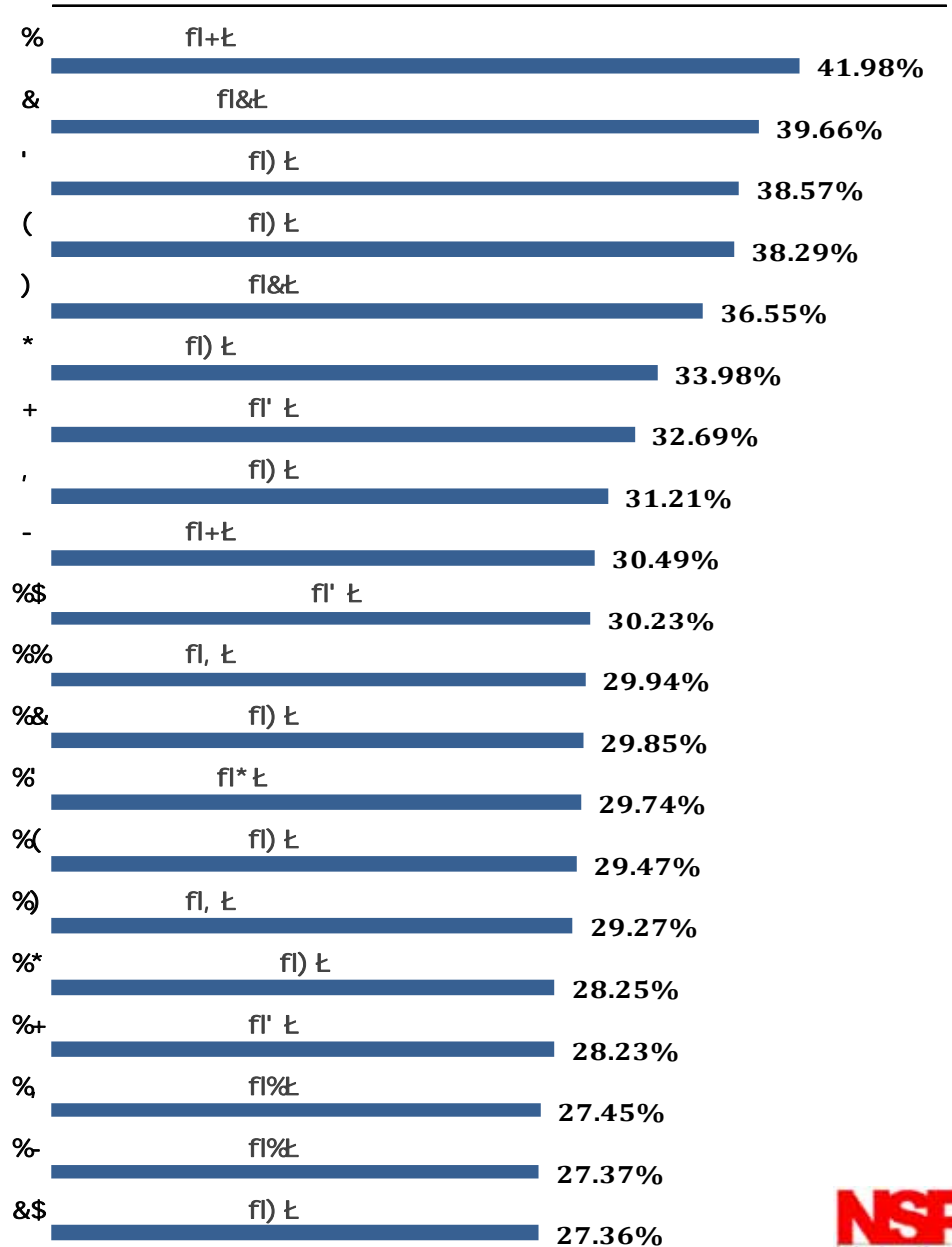
( 1 )

59

2.

50

5



**2011**

**30**

**4**

**89**

**30**

**17640**

**28 ,**

**7**

**20820**

**38460**

1.

20

/2

411

80

1600

2.

120

/4

46

20

2400



<b>47</b>	<b>10</b>	<b>200</b>	<b>21.28%</b>
<b>28</b>	<b>6</b>	<b>120</b>	<b>21.43%</b>
<b>65</b>	<b>17</b>	<b>340</b>	

	<b>6</b>	<b>3</b>	<b>360</b>	<b>50.00%</b>
	<b>2</b>	<b>1</b>	<b>120</b>	<b>50.00%</b>
	<b>14</b>	<b>6</b>	<b>720</b>	<b>42.86%</b>
	<b>3</b>	<b>1</b>	<b>120</b>	<b>33.33%</b>
	<b>7</b>	<b>3</b>	<b>360</b>	<b>42.86%</b>
	<b>4</b>	<b>2</b>	<b>240</b>	<b>50.00%</b>
	<b>1</b>	<b>0</b>	<b>0</b>	<b>0%</b>
	<b>9</b>	<b>4</b>	<b>480</b>	<b>44.44%</b>
	<b>46</b>	<b>20</b>	<b>2400</b>	<b>43.48%</b>

2011	122	101
	166	
	97	101
28800		35
6800		51
20180		4
1600	11	220

**2011**

**674**

**267**

**8.16%**

**55**

**152%**

**272.73**

**2010**

**15000**

9

288

30900

13280

17620

“

”7 25

9 9

“

”

,

9

57030

					( )
11127901				2012.01-2016.12	8900
11127902				2012.01-2016.12	3000
11127903				2012.01-2016.12	6000
21127901				2012.01-2016.12	7000
21127902				2012.01-2015.12	10330
31127901				2012.01-2016.12	3000
41127901				2012.01-2016.12	9300
61127901				2012.01-2016.12	3500
81127901				2012.01-2016.12	6000

2012

2012

:

2012 2 21

3 1 16 ;

2012 3 5

3 20 16 .



：

101

2012 3 16-20

3 17 18

-

•  
•

1

-

;

4



2012

-



2012

ISIS  
PDF



2012

2012 3

10







2012 1 15

ISIS

1



2012 4 15

ISIS



2012

2012

2012

"

"

"

"

"

"

D01

F01

H1601 H1614

"

"

"

1"

"

"

"

"

<http://www.nsf.gov.cn/>

"

"

"

"



1  
/

4

80

2009

2012

50

/

4

2012

5

2012

➤ 100 / 3

➤ 400 ;

➤ 38 40

➤ ;

➤ ;

➤

➤

➤



感谢大家一贯的支持与帮助!

欢迎提出宝贵意见和建议!